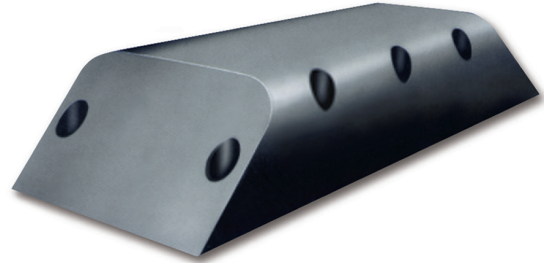


Solid Fender

BP Fender(YBP)



Feature

1. Appropriated for protecting docking facility from lateral berthing load.
2. Minimum damage because of an unbreakable type.
3. Suitable for vessel hull with wide field

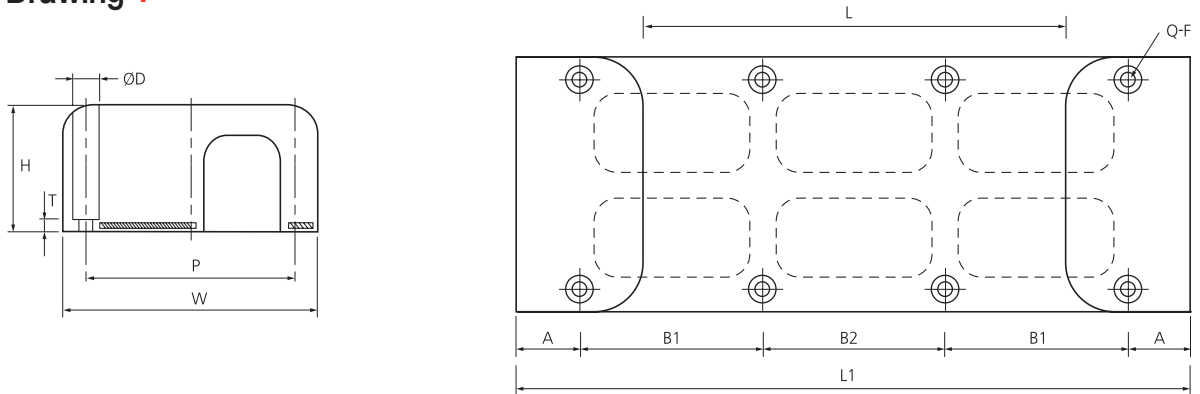
Dimension

Unit : mm

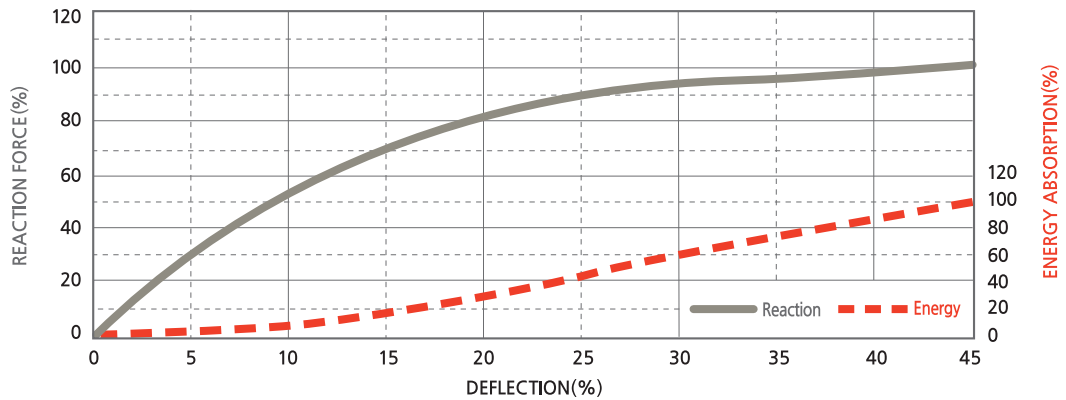
H	F	P	W	ΦD	T	L=1000(Q=6)	L=1500(Q=6)	L=2000(Q=8)	L=2500(Q=8)	L=3000(Q=10)
						A	A	A	A	A
YBP 150	M24 (1")	200	300	65	25	75	75	75	75	75
						575	825	720	885	790
						-	-	710	880	785 x 2
						1300	1800	2300	2800	3300
YBP 200	M30 (1 1/4")	290	400	75	30	100	100	100	100	100
						600	850	735	900	800
						-	-	730	900	800 x 2
						1400	1900	2400	2900	3400
YBP 250	M30 (1 1/4")	380	500	80	35	125	125	125	125	125
						625	875	750	920	815
						-	-	750	910	810 x 2
						1500	2000	2500	3000	3500
YBP 300	M36 (1 1/2")	470	600	90	35	150	150	150	150	150
						650	900	770	935	825
						-	-	760	930	825 x 2
						1600	2100	2600	3100	3600
YBP 400	M36 (1 1/2")	640	800	90	40	200	200	200	200	200
						700	950	800	970	850
						-	-	800	960	850 x 2
						1800	2300	2800	3300	3800
YBP 500	M42 (1 3/4")	820	1000	110	50	250	250	250	250	250
						750	1000	835	1000	875
						-	-	830	1000	875 x 2
						2000	2500	3000	3500	4000
YBP 600	M48 (2")	990	1200	125	60	300	300	300	300	300
						800	1050	870	1035	900
						-	-	860	1030	900 x 2
						2200	2700	3200	3700	4200
YBP 800	M64 (2 1/2")	1340	1600	145	65	400	400	400	400	400
						900	1150	935	1100	950
						-	-	930	1100	950 x 2
						2600	3100	3600	4100	4600
YBP 1000	M64 (2 1/2")	1700	2000	160	70	500	500	500	500	500
						1000	1250	1000	1170	1000
						-	-	1000	1160	1000 x 2
						3000	3500	4000	4500	5000
YBP 1300	M76 (3")	2250	2600	190	75	650	650	650	650	650
						1150	1400	1100	1270	1075
						-	-	1100	1260	1075 x 2
						3600	4100	4600	5100	5600

- Notes**
- Above detail dimension of components can be changed depending on owner specification and local environment condition.
 - Detail dimension will be guided by our drawing and specification.

I Drawing I



I Performance Curve I



I Performance Table I

·Tolerance : ±10%

Size		YBP 150(H)	YBP 200(H)	YBP 250(H)	YBP 300(H)	YBP 400(H)	YBP 500(H)	YBP 600(H)	YBP 800(H)	YBP 1000(H)	YBP 1300(H)
Def.45%	R·F(kN)	1254.4	1901.2	2518.6	3018.4	4155.2	5292	5801.6	6644.4	8310.4	10094
	E·A(kN-m)	16.66	37.24	49.98	69.58	117.6	166.6	235.2	362.6	568.4	872.2

[Deflection 45%, Per 1m Length]

I Compression Test I



Notes

- Above detail performance of components can be changed depending on owner specification and local environment condition.
- Detail performance will be guided by our drawing and specification.