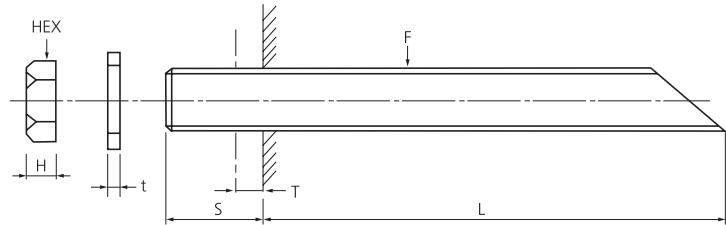


# Chemical Anchor Bolt



## | Drawing |



## | Dimension |

Unit : mm

F	Nut		Anchor Bolt	
	K	L	S	
M22 (7/8")	8	145	H+t+T+K [rounded up to nearest 5mm]	
M24 (1")	10	175		
M27 (1 1/8")	10	210		
M30 (1 1/4")	11	210		
M36 (1 1/2")	12	250		
M42 (1 3/4")	13	320		
M48 (2")	15	320		
M56 (2 1/4")	18	400		
M64 (2 1/2")	20	450		
M76 (3")	20	550		

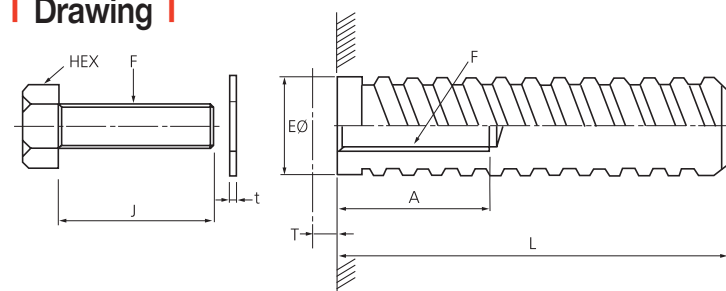
• T : Clamping Thickness of Fender or Bracket

• t : See page 60

# Chemical Anchor Bolt [Box Type]



## | Drawing |



## | Dimension |

Unit : mm

F	Anchor Bolt		Box		
	K	J	A	E	L
M22 (7/8")	30	t+T+K [round up to nearest 5mm]	100	32	200
M24 (1")	35		100	35	250
M27 (1 1/8")	37		100	40	250
M30 (1 1/4")	40		100	45	250
M36 (1 1/2")	45		120	55	350
M42 (1 3/4")	50		120	60	400
M48 (2")	60		120	65	450
M64 (2 1/2")	75		120	80	450

• T : Clamping Thickness of Fender or Bracket

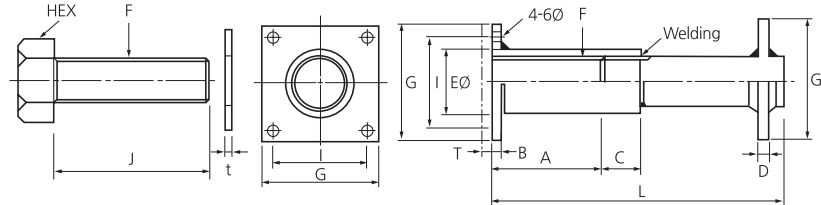
• t : See page 60

# Misc & Accessories

## I-Anchor Bolt



### | Drawing |



### | Dimension |

Unit : mm

F	Anchor Bolt		Flange, Box, Flush, Bolt							
	K	J	A	B	C	D	EØ	G	I	L
M22 (7/8")	30	t+T+K [round up to nearest 5mm]	50	6	25	6	28	65	50	165
M24 (1")	35		55	6	25	6	32	70	55	175
M27 (1 1/8")	37		60	6	30	9	35	75	60	200
M30 (1 1/4")	40		65	6	30	9	38	75	60	225
M36 (1 1/2")	45		70	6	35	9	45	85	70	270
M42 (1 3/4")	50		75	6	40	12	55	90	75	325
M48 (2")	60		85	6	45	12	65	120	95	360
M56 (2 1/4")	70		90	6	55	16	75	125	100	435
M64 (2 1/2")	75		100	6	60	16	80	130	105	475
M76 (3")	80		120	6	75	19	95	155	120	550

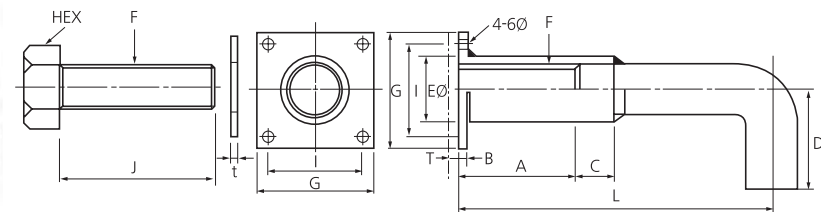
• T : Clamping Thickness of Fender or Bracket

• t : See page 60

## J-Anchor Bolt



### | Drawing |



### | Dimension |

Unit : mm

F	Anchor Bolt		Flange, Box, Flush, Bolt							
	K	J	A	B	C	D	EØ	G	I	L
M22 (7/8")	30	t+T+K [round up to nearest 5mm]	50	6	25	50	28	65	50	175
M24 (1")	35		55	6	25	50	32	70	55	185
M27 (1 1/8")	37		60	6	30	75	35	75	60	210
M30 (1 1/4")	40		65	6	30	85	38	75	60	230
M36 (1 1/2")	45		70	6	35	100	45	85	70	255
M42 (1 3/4")	50		75	6	40	100	55	90	75	290
M48 (2")	60		85	6	45	120	65	120	95	325
M56 (2 1/4")	70		90	6	55	160	75	125	100	375
M64 (2 1/2")	75		100	6	60	160	80	130	105	375

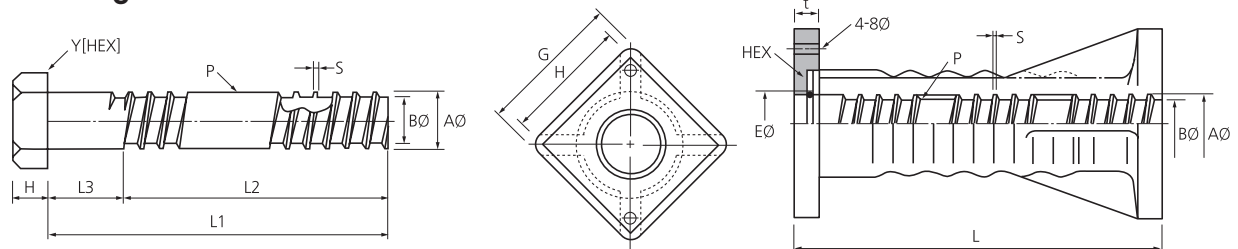
• T : Clamping Thickness of Fender or Bracket

• t : See page 60

# Resin Anchor Bolt / Resin Plug



## Drawing



## Dimension

Unit : mm

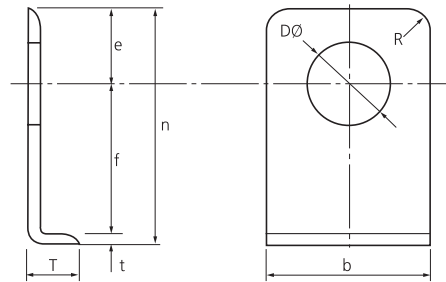
Anchor Bolt	F	H	Y	L1	L2	L3	AØ	BØ	S	P [pitches / inch]
	M22 (7/8")	13	32	160	105	55	19	14	2.0	2¾
	M24 (1")	18	41	210	145	65	25	18	2.0	2½
	M30 (1 1/4")	22	50	270	185	85	32	24	2.5	2
	M36 (1 1/2")	27	58	330	235	95	38	30	2.5	2
	M42 (1 3/4")	32	67	330	235	95	44	35	3.0	1¾
	M48 (2")	36	77	395	265	130	50	40	3.5	1½
	M64 (2 1/2")	45	95	410	275	135	65	53	4.0	1¾
	M76 (3")	55	110	440	305	135	76	62	4.5	1
Resin Plug	F	EØ	G	H	t	L	AØ	BØ	S	P [pitches / inch]
	M22 (7/8")	27.0	60	55	25	150	21	16	3	2¾
	M24 (1")	35.5	63	75	25	200	26	19	3	2½
	M30 (1 1/4")	42.5	100	80	30	250	33	25	3	2
	M36 (1 1/2")	50.0	120	110	30	300	40	31	3.5	2
	M42 (1 3/4")	57.0	120	110	30	300	46	36	3.5	1¾
	M48 (2")	63.0	160	150	30	360	53	41.5	4	1½
	M64 (2 1/2")	78.0	160	150	30	360	68	54.5	4.5	1¾
M76 (3")	88.0	180	170	30	400	79	64	5	1	

# Misc & Accessories

## L-Type Washer



| Drawing |



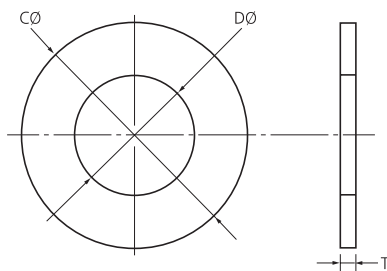
Unit : mm

| Dimension |

F	YOY, YNV Fender									Spool Fender								
	Size	b	D	e	f	n	R	T	t	Size	b	D	e	f	n	R	T	t
M22 (7/8")	150H	68	25	23	32	59.5	10	12	4.5	-	-	-	-	-	-	-	-	-
M24 (1")	200H	74	29	33	42	79.5	10	14	4.5	500H	48	29	24	52	80.5	15	18.5	4.5
M27 (1 1/8")	250H	88	34	42	48	94.5	10	16	4.5	630H-650H	60	34	30	72	106.5	15	19.5	4.5
M30 (1 1/4")	300H	100	37	47	58	109.5	10	19	4.5	800H-900H	60	37	30	77	111.5	15	24.5	4.5
M36 (1 1/2")	400H	119	43	52	68	126	10	22	6	1000H	68	43	34	102	142	25	26.0	6
M42 (1 3/4")	500H	127	49	56	83	145	10	25	6	1150H-1250H	78	49	39	102	147	30	31.0	6
M48 (2")	600H	139	56	61	98	165	10	28	6	1400H-1600H	92	56	46	102	154	30	34.0	6
M56 (2 1/4")	-	-	-	-	-	-	-	-	-	1700H	106	63	53	102	161	30	40.0	6
M64 (2 1/2")	800H	195	70	100	134	242	10	32	8	2000H	116	70	58	102	168	40	38.0	8
	1000H	215	70	110	164	282	10	36	8	2250H	116	70	58	127	193	40	43.0	8
	-	-	-	-	-	-	-	-	-	2500H	116	70	58	127	193	40	50.0	8

## Round Washer

| Drawing |



| Dimension |

Unit : mm

F	YBP Fender			YCV, YTR Fender		
	C	D	t	C	D	t
M22 (7/8")	44	25	4.5	-	-	-
M24 (1")	52	29	4.5	90	28	6
M27 (1 1/8")	58	34	4.5	-	-	-
M30 (1 1/4")	62	37	4.5	90	34	6
M36 (1 1/2")	72	43	6	130	42	9
M42 (1 3/4")	82	49	6	140	47	9
M48 (2")	95	56	6	160	54	12
M64 (2 1/2")	115	70	8	180	68	12
M76 (3")	135	82	10	180	79	12

## Chain & U-Anchor



## Template

