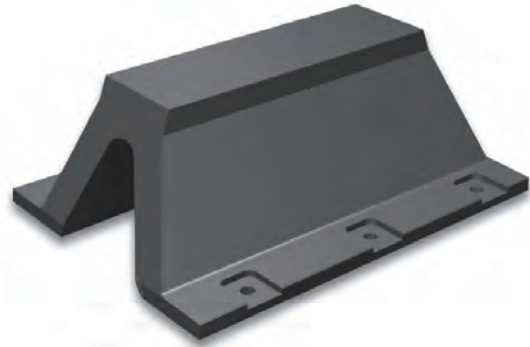


# Solid Fender

## NV Fender(YNV)



### Feature

1. NV fender is enhanced more against OV Fender.
2. NV fender has 15% increased E.A compared with other arch fender
3. Compression capacity is increased from 45% to 52.5%
4. R.F 17% and 32% surface reaction force is decreased If NV is compared to other arch fender with same E.A

### Dimension

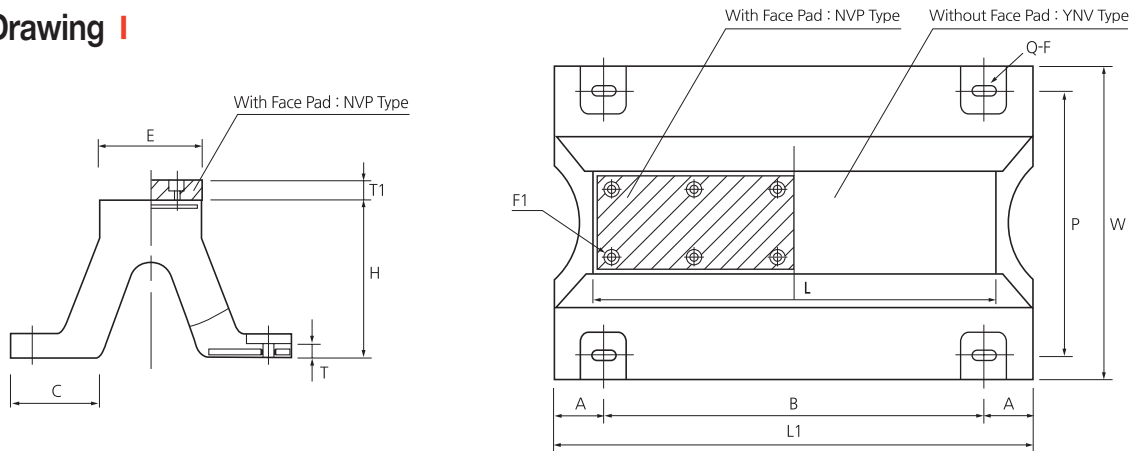
Unit : mm

H	F	P	W	C	E	T	NVP Type		L=1000	L=1500	L=2000	L=2500	L=3000
							F1	T1	(Q=4)	(Q=6)	(Q=8)	(Q=8)	(Q=10)
									A	A	A	A	A
									B	B	B	B	B
								L1	L1	L1	L1	L1	
YNV 150	M22 (7/8")	240	300	96	120	18	M16	30	110	112.5	107.5	110	107.5
									855	675 x 2	620 x 3	785 x 3	715 x 4
									1075	1575	2075	2575	3075
YNV 200	M24 (1")	320	400	128	160	18	M16	30	120	120	120	122.5	120
									860	680 x 2	620 x 3	785 x 3	715 x 4
									1100	1600	2100	2600	3100
YNV 250	M27 (1 1/8")	410	500	160	200	23	M16	30	130	132.5	132.5	127.5	132.5
									865	680 x 2	620 x 3	790 x 3	715 x 4
									1125	1625	2125	2625	3125
YNV 300	M30 (1 1/4")	490	600	192	240	23	M16	40	140	140	137.5	140	145
									870	685 x 2	625 x 3	790 x 3	715 x 4
									1150	1650	2150	2650	3150
YNV 400	M36 (1 1/2")	670	800	256	320	30	M16	40	150	150	147.5	150	150
									900	700 x 2	635 x 3	800 x 3	725 x 4
									1200	1700	2200	2700	3200
YNV 500	M42 (1 3/4")	840	1000	320	400	35	M20	50	160	160	157.5	160	165
									930	715 x 2	645 x 3	810 x 3	730 x 4
									1250	1750	2250	2750	3250
YNV 600	M48 (2")	1010	1200	384	480	40	M20	50	170	170	167.5	170	170
									960	730 x 2	655 x 3	820 x 3	740 x 4
									1300	1800	2300	2800	3300
YNV 800	M64 (2 1/2")	1340	1600	501	640	45	M24	60	180	180	180	182.5	180
									1040	770 x 2	680 x 3	845 x 3	760 x 4
									1400	1900	2400	2900	3400
YNV 1000	M64 (2 1/2")	1680	2000	640	800	50	M24	60	200	200	200	202.5	200
									1100	800 x 2	700 x 3	865 x 3	775 x 4
									1500	2000	2500	3000	3500

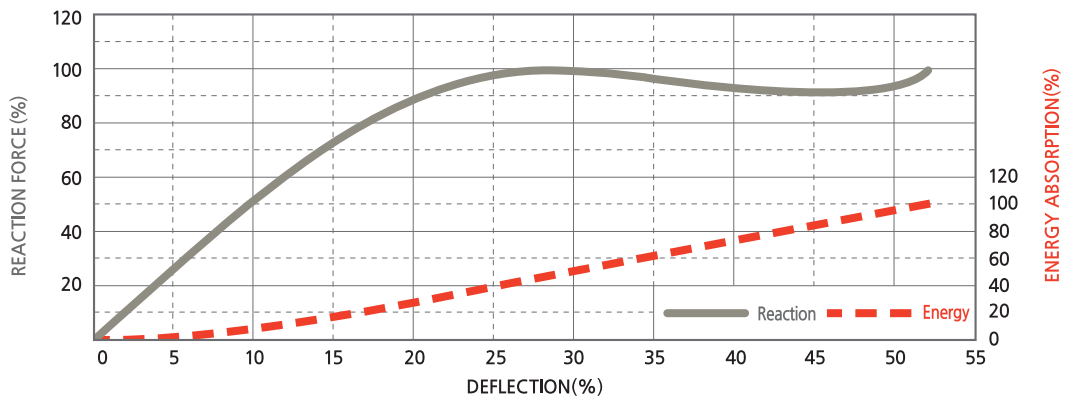
#### Notes

- Above detail dimension of components can be changed depending on owner specification and local environment condition.
- Detail dimension will be guided by our drawing and specification.

## Drawing



## Performance Curve



## Performance Table

·Tolerance : ±10%

Size	Rubber Grade Performance	R <sub>H</sub>		R <sub>M</sub>		R <sub>L</sub>	
		R·F(kN)	E·A(kN·m)	R·F(kN)	E·A(kN·m)	R·F(kN)	E·A(kN·m)
YNV 150H		117.6	6.86	107.8	5.88	88.2	4.9
YNV 200H		166.6	12.74	137.2	10.78	117.6	8.82
YNV 250H		205.8	20.58	176.4	17.64	147	13.72
YNV 300H		245	29.4	215.6	25.48	166.6	20.58
YNV 400H		323.4	51.94	294	45.08	225.4	36.26
YNV 500H		411.6	81.34	352.8	70.56	284.2	56.84
YNV 600H		490	117.6	421.4	98	343	81.34
YNV 800H		646.8	205.8	568.4	176.4	450.8	147
YNV 1000H		813.4	323.4	705.6	284.2	568.4	225.4

·R·F=Reaction Force ·E·A=Energy Absorption

[Deflection 52.5%, Per 1m Length]

## Compression Test



### Notes

- Above detail performance of components can be changed depending on owner specification and local environment condition.
- Detail performance will be guided by our drawing and specification.