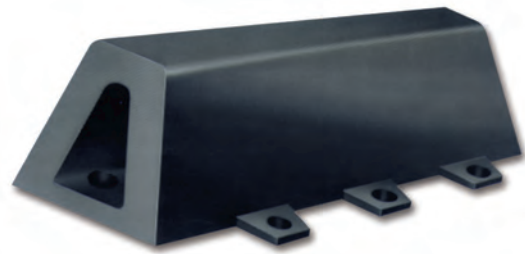


Solid Fender

CV Fender(YCV)



Feature

1. The fender is the most common fender in the field.
2. Steel plate is embedded in the whole bottom of fender.
3. R.F and E.A are physically stable type on all direction.
4. It is easy setup and maintenance.

Dimension

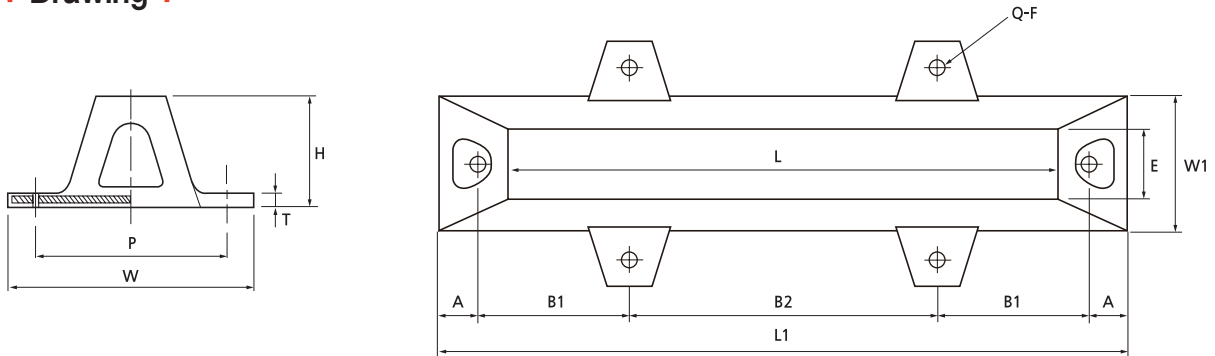
Unit : mm

H	F	P	W	W1	E	T	L=1000(Q=4)	L=1500(Q=4)	L=2000(Q=6)	L=2500(Q=6)	L=3000(Q=8)	L=3500(Q=8)
							A	A	A	A	A	A
							B1	B1	B1	B1	B1	B1
							B2	B2	B2	B2	B2	B2
							L1	L1	L1	L1	L1	L1
YCV 200	M24 (1")	350	445	250	125	25	70	70	70	70	70	70
							555	805	605	855	655	905
							-	-	900	900	900 x 2	900 x 2
							1250	1750	2250	2750	3250	3750
YCV 300	M30 (1 1/4")	530	645	375	188	35	75	75	75	75	75	75
							600	850	600	850	600	850
							-	-	1000	1000	1000 x 2	1000 x 2
							1350	1850	2350	2850	3350	3850
YCV 400	M36 (1 1/2")	710	840	500	250	40	85	85	85	85	85	85
							640	890	540	790	440	690
							-	-	1200	1200	1200 x 2	1200 x 2
							1450	1950	2450	2950	3450	3950
YCV 500	M42 (1 3/4")	860	1000	625	315	40	100	100	100	100	100	100
							675	925	675	925	675	925
							-	-	1000	1000	1000 x 2	1000 x 2
							1550	2050	2550	3050	3550	4050
YCV 600	M48 (2")	1050	1210	750	375	50	115	115	115	115	115	115
							710	960	700	950	690	940
							-	-	1020	1020	1020 x 2	1020 x 2
							1650	2150	2650	3150	3650	4150
YCV 700	M48 (2")	1180	1380	880	450	55	115	115	115	115	115	115
							635	885	635	885	635	885
							-	-	1000	1000	1000 x 2	1000 x 2
							1500	2000	2500	3000	3500	4000
YCV 800	M64 (2 1/2")	1350	1550	1000	500	60	130	130	130	130	130	130
							670	920	645	895	620	870
							-	-	1050	1050	1050 x 2	1050 x 2
							1600	2100	2600	3100	3600	4100
YCV 1000	M64 (2 1/2")	1600	1800	1250	625	65	150	150	150	150	150	150
							700	950	600	850	500	750
							-	-	1200	1200	1200 x 2	1200 x 2
							1700	2200	2700	3200	3700	4200

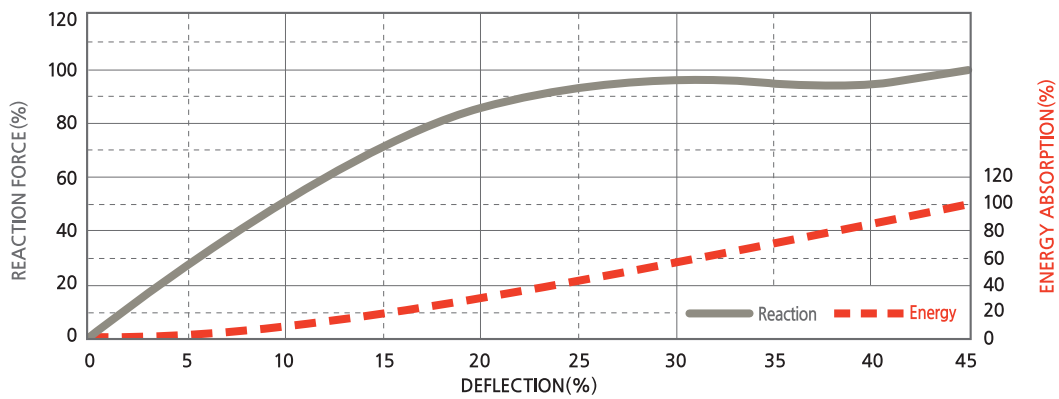
Notes

- Above detail dimension of components can be changed depending on owner specification and local environment condition.
- Detail dimension will be guided by our drawing and specification.

| Drawing |



| Performance Curve |



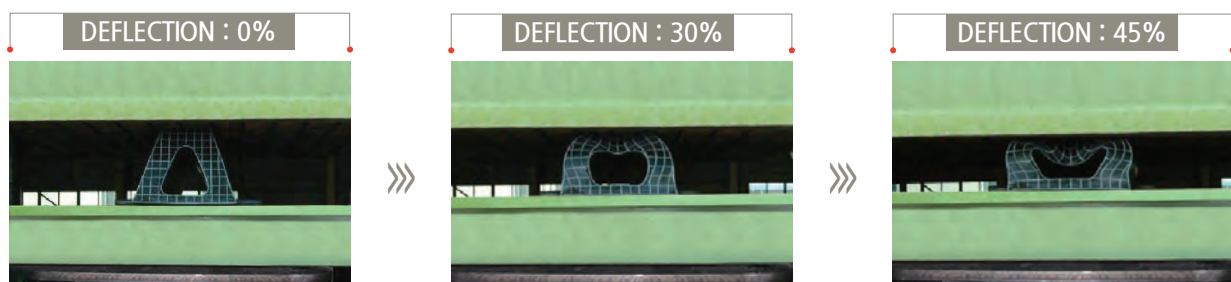
| Performance Table |

·Tolerance : $\pm 10\%$

Rubber Grade Size Performance	R_H		R_M		R_L	
	R·F(kN)	E·A(kN·m)	R·F(kN)	E·A(kN·m)	R·F(kN)	E·A(kN·m)
YCV 200H	147	9.8	117.6	7.84	78.4	4.9
YCV 300H	225.4	21.56	166.6	15.68	117.6	9.8
YCV 400H	294	39.2	235.2	29.4	156.8	19.6
YCV 500H	372.4	60.76	294	45.08	186.2	29.4
YCV 600H	441	88.2	333.2	63.7	235.2	39.2
YCV 800H	588	156.8	470.4	117.6	313.6	78.4
YCV 1000H	735	245	588	176.4	372.4	117.6
YCV 1300H	960.4	411.6	764.4	303.8	480.2	196

[Deflection 45%, Per 1m Length]

| Compression Test |



Notes

- Above detail performance of components can be changed depending on owner specification and local environment condition.
- Detail performance will be guided by our drawing and specification.