

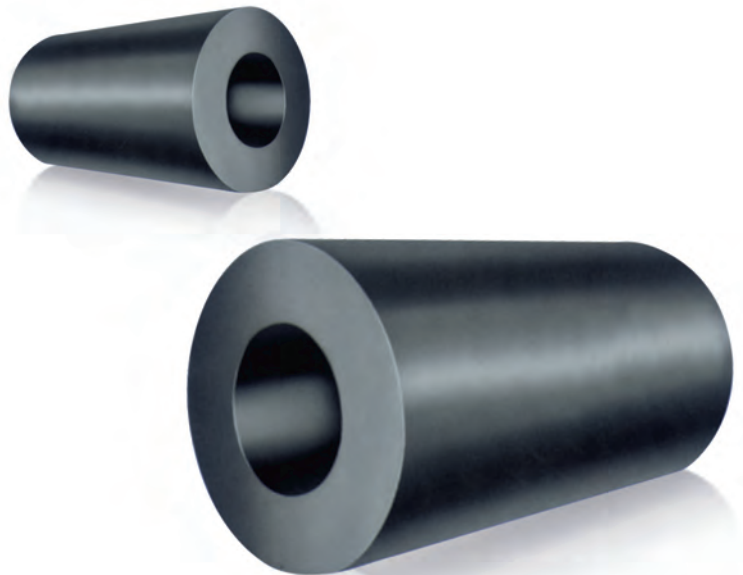
Solid Fender

CY Fender(YCY)



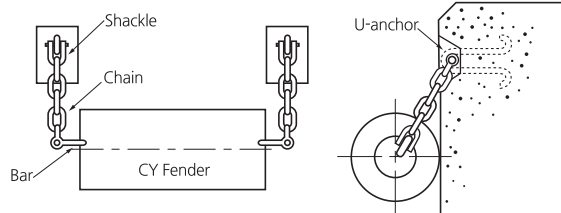
Feature

1. A simple and an economical design
2. Outside diameter : 150 - 1600mm
3. The best abrasion resistance, long-term use
4. The most commonly available used fender

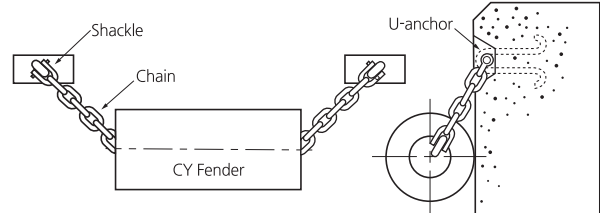


I Drawing I

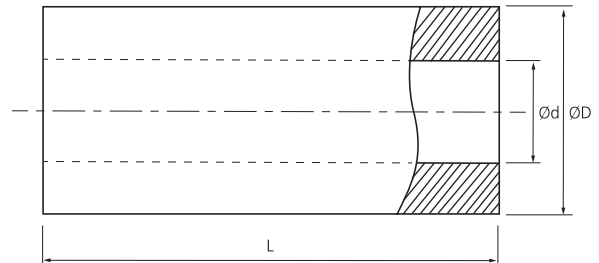
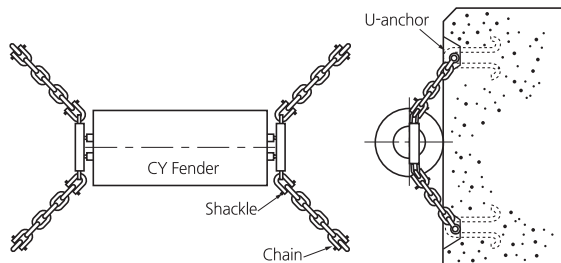
Fitting Chain and bar



Fitting Chain



Ladder



I Dimension I

Unit : mm

Size	YCYø150 xø75	YCYø200 xø100	YCYø300 xø150	YCYø400 xø200	YCYø500 xø250	YCYø600 xø300	YCYø800 xø400	YCYø1000 xø500	YCYø1200 xø600	YCYø1400 xø700	YCYø1600 xø800
ØD	150	200	300	400	500	600	800	1,000	1,200	1,400	1,600
Ød	75	100	150	200	250	300	400	500	600	700	800
L(m)	15	15	15	15	15	12	12	10	8	8	5

- Notes**
- Above detail dimension of components can be changed depending on owner specification and local environment condition.
 - Detail dimension will be guided by our drawing and specification.

I Performance Table I

Tolerance : ±10%

Size	Rubber Grade Performance	R _H		R _M		R _L	
		R·F(kN)	E·A(kN·m)	R·F(kN)	E·A(kN·m)	R·F(kN)	E·A(kN·m)
YCY ø150 x ø75		73.5	1.96	58.8	1.96	40.18	0.98
YCY ø200 x ø100		98	3.92	75.46	2.94	52.92	1.96
YCY ø300 x ø150		147	8.82	117.6	6.86	78.4	4.9
YCY ø400 x ø200		196	15.68	156.8	12.74	107.8	7.84
YCY ø500 x ø250		245	24.5	186.2	19.6	127.4	12.74
YCY ø600 x ø300		294	35.28	225.4	28.42	156.8	18.62
YCY ø800 x ø400		392	62.72	294	50.96	205.8	33.32
YCY ø1000 x ø500		490	98	372.4	80.36	254.8	51.94
YCY ø1200 x ø600		588	137.2	450.8	117.6	313.6	74.48
YCY ø1400 x ø700		686	196	529.2	156.8	362.6	98
YCY ø1600 x ø800		784	254.8	597.8	205.8	411.6	137.2

- R·F=Reaction Force - E·A=Energy Absorption - Specialize on request

[Deflection 50%, Per 1m Length]

- Notes**
- Above detail performance of components can be changed depending on owner specification and local environment condition.
 - Detail performance will be guided by our drawing and specification.