

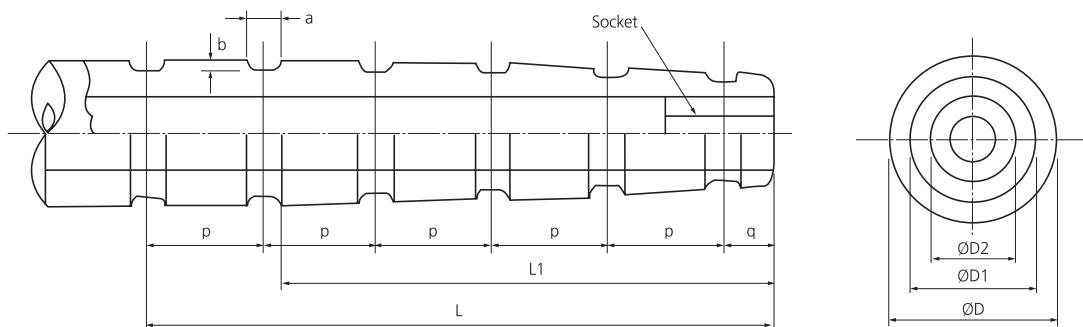
# BC Type Fender

## Feature

This is mainly for tug boat. BC fender is more harder & stable under more extreme conditions than any other fender type. A complete "ready to install" fender kit including tapered ends, connecting plugs, end plugs, drill holes as well as numbered stern and bow fender sets are available



## I Type A For Use of Bow And Stern Of Vessels I



L : Maximum length available is 16m

## I Dimension I

Unit : mm

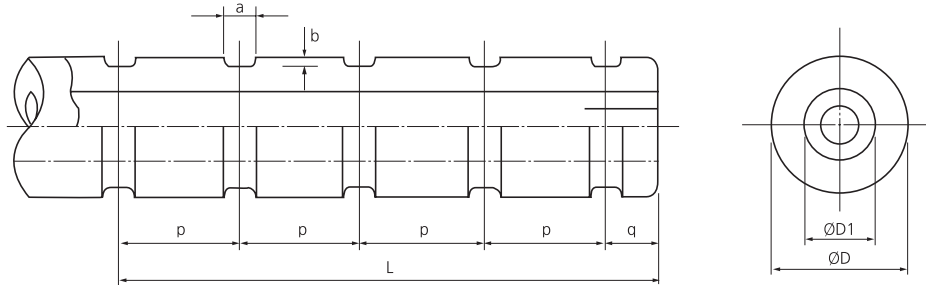
Size	ØD	ØD <sub>1</sub>	ØD <sub>2</sub>	a	b	L <sub>1</sub>	p	q	Socket		
									I,D	O,D	Length
YBC Ø200×Ø100	200	150	100	50	15	500	600 ~ 900	150	-	-	-
YBC Ø250×Ø125	250	190	125	50	15	500	600 ~ 900	150	-	-	-
YBC Ø300×Ø150	300	225	150	50	15	700	600 ~ 900	200	-	-	-
YBC Ø350×Ø175	350	260	175	70	20	800	600 ~ 900	200	-	-	-
YBC Ø400×Ø200	400	300	200	70	20	850	600 ~ 900	200	100	202	300
YBC Ø500×Ø250	500	375	250	70	30	900	600 ~ 900	250	100	252	350
YBC Ø600×Ø300	600	450	300	85	30	900	600 ~ 900	250	150	303	400
YBC Ø700×Ø350	700	525	350	85	40	1000	600 ~ 900	300	150	354	400
YBC Ø800×Ø400	800	600	400	85	40	1000	600 ~ 900	300	150	404	400
YBC Ø1000×Ø500	1000	790	500	85	40	1100	600 ~ 900	350	200	504	500
YBC Ø1200×Ø600	1200	980	600	95	50	1100	600 ~ 900	350	200	504	500

### Notes

- Above detail dimension of components can be changed depending on owner specification and local environment condition.
- Detail dimension will be guided by our drawing and specification.

# Ship Fender

## I Type B For Use of Flat Sided Vessels I



L : Maximum length available is 18m

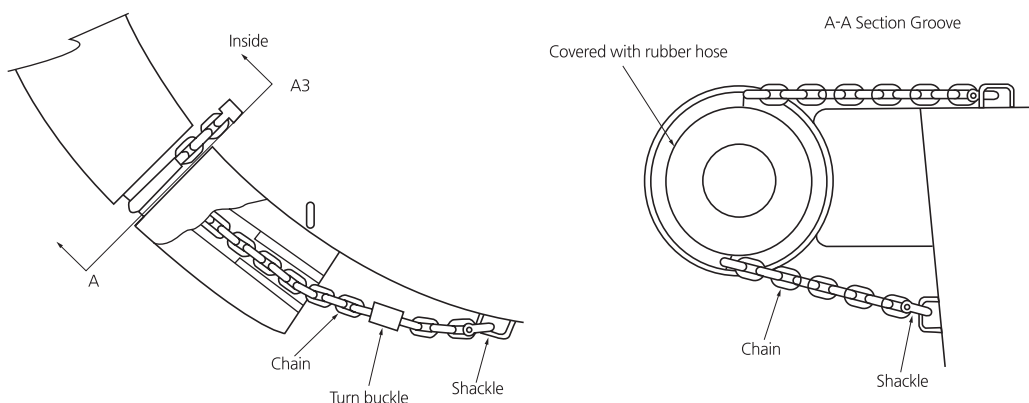
## I Dimension I

Unit : mm

Size	ØD	ØD <sub>1</sub>	a	b	p	q
YBC Ø100×Ø50	100	50	30	10	600 ~ 900	100
YBC Ø150×Ø75	150	75	30	10	600 ~ 900	100
YBC Ø200×Ø100	200	100	50	15	600 ~ 900	150
YBC Ø250×Ø125	250	125	50	15	600 ~ 900	150
YBC Ø300×Ø150	300	150	50	15	600 ~ 900	200
YBC Ø350×Ø175	350	175	70	20	600 ~ 900	200
YBC Ø400×Ø200	400	200	70	20	600 ~ 900	200
YBC Ø500×Ø250	500	250	70	30	600 ~ 900	250
YBC Ø600×Ø300	600	300	85	30	600 ~ 900	250
YBC Ø700×Ø350	700	350	85	40	600 ~ 900	350
YBC Ø800×Ø400	800	400	85	40	600 ~ 900	350
YBC Ø1000×Ø500	1000	500	85	40	600 ~ 900	350

- Notes**
- Above detail dimension of components can be changed depending on owner specification and local environment condition.
  - Detail dimension will be guided by our drawing and specification.

## I Method of Installation I



## I Dimension I

Size of Fender	Chain		Shackle	Turnbuckle
	For Inside	For Groove		
LESS THAN Ø600	Ø16	Ø16	SC-16	Ø19
INCLUDING AND OVER Ø600	Ø19	Ø19	SC-20	Ø22

- Notes**
- Above detail dimension of components can be changed depending on owner specification and local environment condition.
  - Detail dimension will be guided by our drawing and specification.